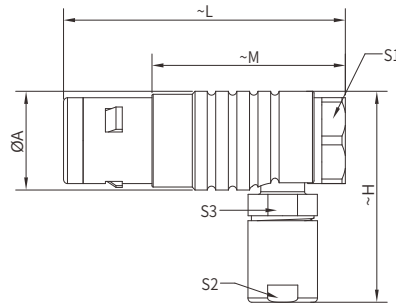


POA Angled Plug, Cable Collet

- Connector series: POA
- Contact: Hermaphroditic
- Locking type: Self-locking
- Orientation type: Angled
- Part No.: POA.XE.XXX.CLACXX
- Mated with: FSA series

Note: "X" refers to part number definition on page 101



General Information

Ambient temperature:	-55°C~+200°C
Endurance:	>5000 cycles
Insulator:	PEEK
Housing:	Brass with Cr plated
Connector contacts:	Brass with gold plated

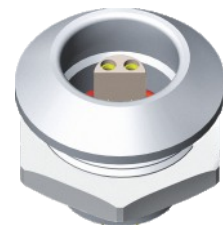
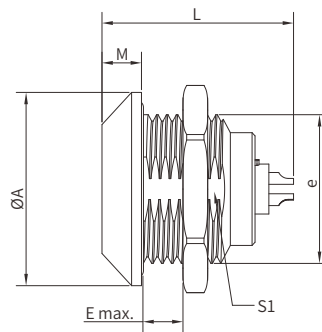
Insulation resistance:	≥100MΩ
IP rating:	IP68
Shielding efficiency:	at 10MHz>95dB/at 1GHz>80dB
Salt spray corrosion test:	>144h

Size	Dimensions(mm)						
	A	e	E	L	M	S1	S2
0E	18	M14*1.0	5.5	34	4.0	12.5	8
1E	20	M16*1.0	9.0	45	4.5	14.5	9
2E	25	M20*1.0	9.0	54	5.0	18.5	12

FSA Fixed Socket, Nut Fixing

- Connector series: FSA
- Contact: Hermaphroditic
- Locking type: Self-locking
- Orientation type: Straight
- Part No.: FSA.XE.XXX.CLL
- Mated with: PSA/POA/PPP series

Note: "X" refers to part number definition on page 101



General Information

Ambient temperature:	-55°C ~ + 200°C
Endurance:	>5000 cycles
Insulator:	PEEK
Connector contacts:	Brass with gold plated
Coupling nut/screw:	Brass with nickel plated
Housing:	Brass with Cr plated

Seal/O-ring:	Silicone
Insulation resistance:	≥100MΩ
IP rating:	IP68
Shielding efficiency:	at 10MHz>95dB/at 1GHz>80dB
Salt spray corrosion test:	>144h

Size	Dimensions(mm)					
	A	e	E	L Max	M	S1
0E	18	M14*1.0	5.5	21.7	4.0	12.5
1E	20	M16*1.0	9.0	27.0	4.5	14.5
2E	25	M20*1.0	9.0	30.7	5.0	18.5

Note: Panel cut-out (page 164)